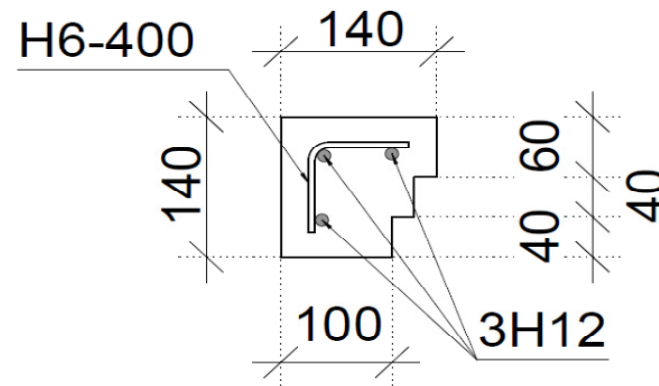


Window Surround Section	Horizontal Window Surround Length										
	0.60m	0.80m	1.00m	1.25m	1.50m	1.75m	2.00m	2.25m	2.50m	2.75m	3.00m
	Ult. Load Capacity [kN/m]	Ult. Load Capacity [kN/m]	Ult. Load Capacity [kN/m]	Ult. Load Capacity [kN/m]	Ult. Load Capacity [kN/m]	Ult. Load Capacity [kN/m]	Ult. Load Capacity [kN/m]	Ult. Load Capacity [kN/m]	Ult. Load Capacity [kN/m]	Ult. Load Capacity [kN/m]	Ult. Load Capacity [kN/m]
100x140mm	33.75	33.75	21.60	13.82	9.60	7.05	5.40	4.27	3.46	2.86	2.40

Design	I.S. EN 1992-1-1:2005
Concrete Strength	C40/50 at 28 days
Steel Strength	Bars 500 Mpa
Load	UDL Dead factor 1.35 + UDL Imposed factor 1.50
Deflection	Span / 500
Cover	25mm to the main reinforcement
Main Bars	3H12
Transverse Bars	H6 at 400mm C/C



**Window Surround Section**

**Notes:** The window surround should not be considered as load bearing concrete elements.  
The above ultimate load capacity considered for horizontal window surround to satisfy crack width limit of 0.1mm.  
Vertical window surrounds are structurally adequate with the same 3H12 main bars and standard lengths as shown in the above table.