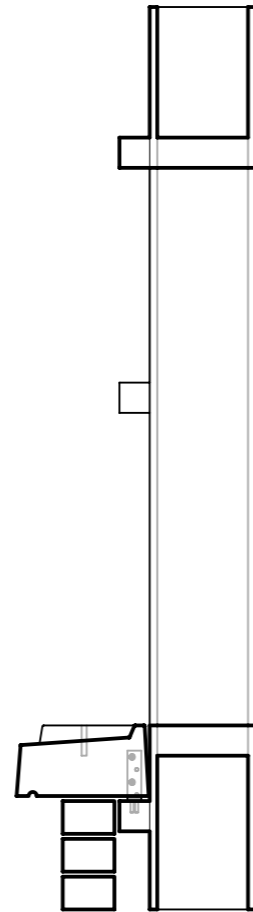
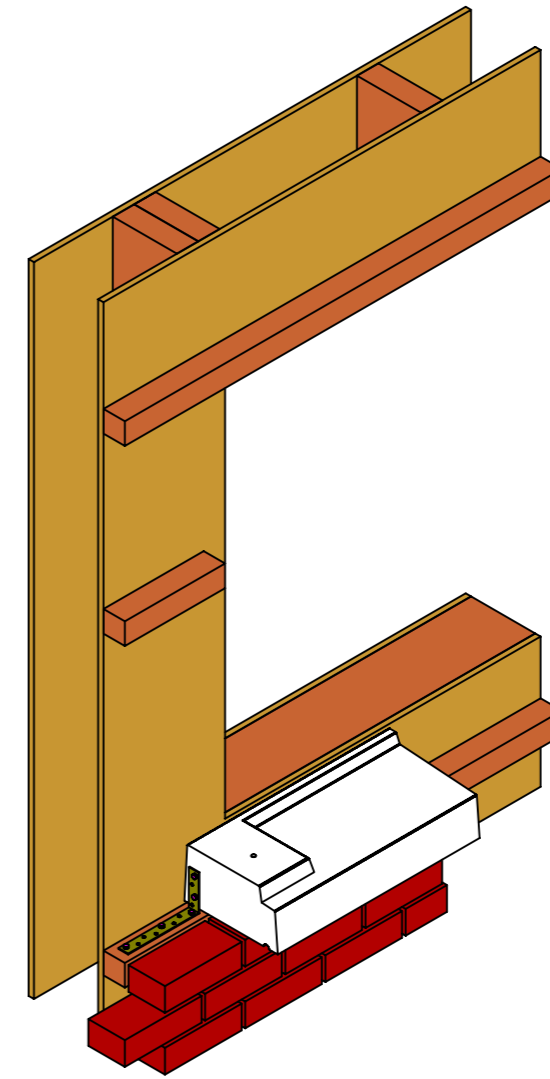


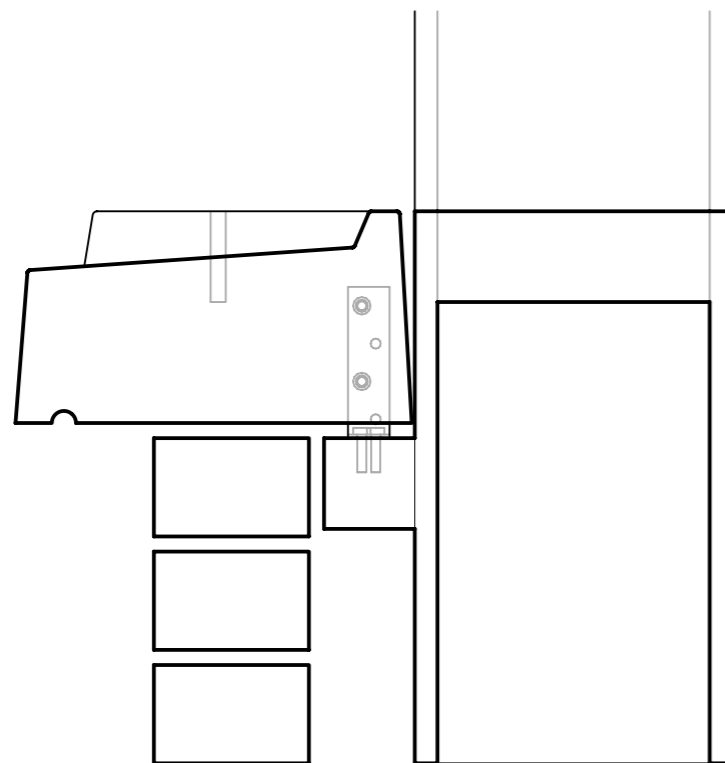
**Front Elevation**



**Right Side Elevation**



**ISO Elevation**



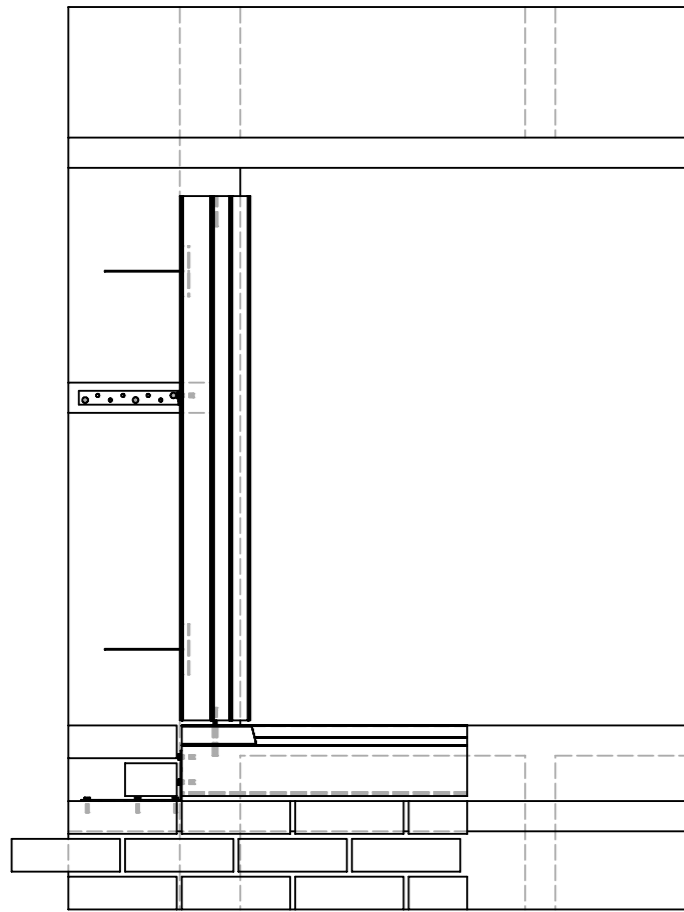
**Right Side Elevation - Detail**

**Window Surround Installation Guide for Timber Frame Construction Stooled Sill – Strap & Wall Tie System, Sheet 1 of 5**

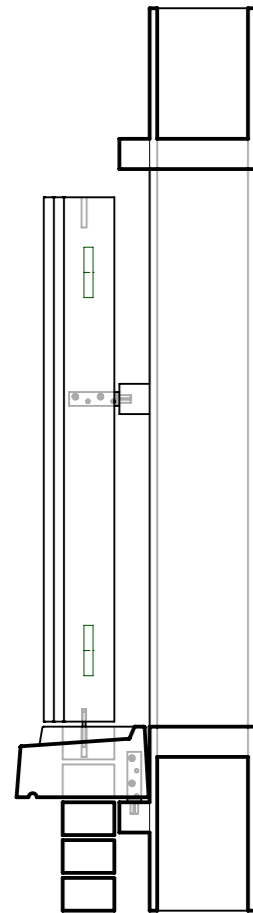
1. Construct outer leaf brick/ block wall up to the underside of the sill. Ensure bricks/ blocks below are fully set, then post fix galvanised L-Shape steel straps 30x5mm to the both ends of the recon stone sill with Min. 2 No. screws each.
2. Pour the mortar bed for the recon stone window sill and place the window sill, shim, and level into position. Once levelled secure the straps to the timber batten with Min. 2 No. screws per strap into the timber batten. Once the window sill is fully installed allow the mortar to dry.

  
 Double L Concrete & Granite Products  
 Callaighstown, Rathcoole, Co. Dublin  
 ♦ Phone: +353 (0) 1 4580729  
 ♦ Fax: +353 (0) 1 4588168  
 ♦ Email: info@doubleconcrete.com  
 ♦ Web: www.doubleconcrete.com

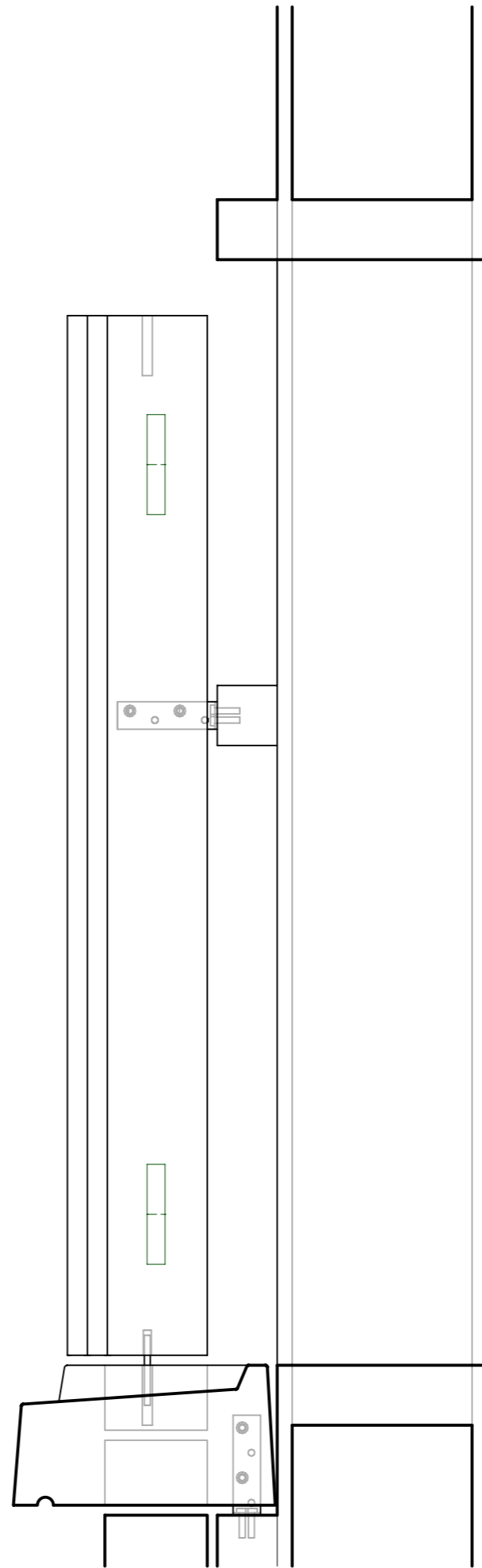
Title: <b>Window Surround Installation Guide for Timber Frame Construction Stooled Sill Strap &amp; Wall Tie System, Sheet 1 of 5</b>		
Drg. No.: <b>WSIGTFCSTS – SWTS 01</b>		
Scale: <b>NTS</b>	Rev.: <b>02</b>	Date: <b>20/06/2022</b>
Drawn by: <b>David Reichel</b>	Check by: <b>Damien Lee</b>	



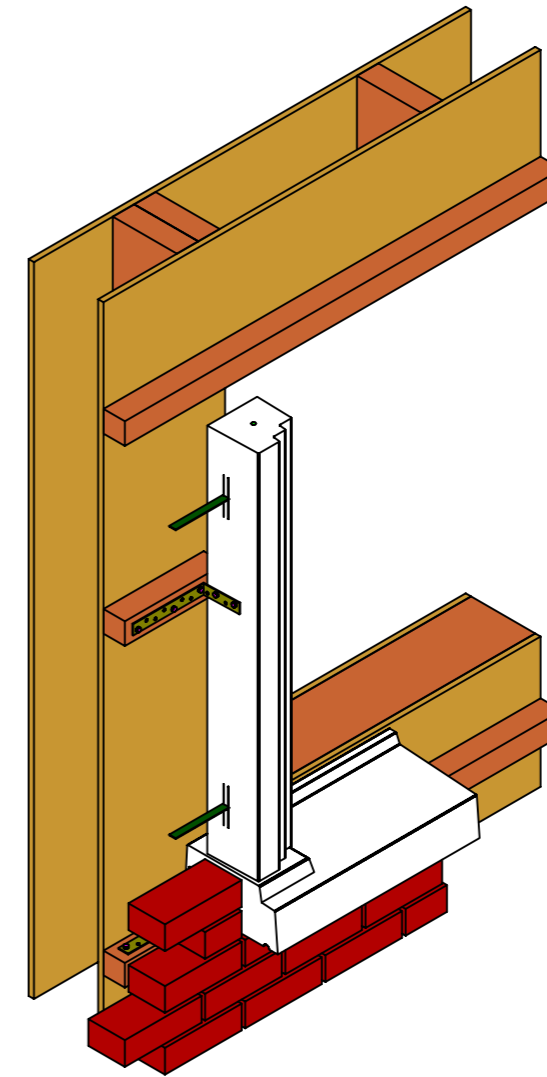
**Front Elevation**



**Right Side Elevation**



**Right Side Elevation - Detail**



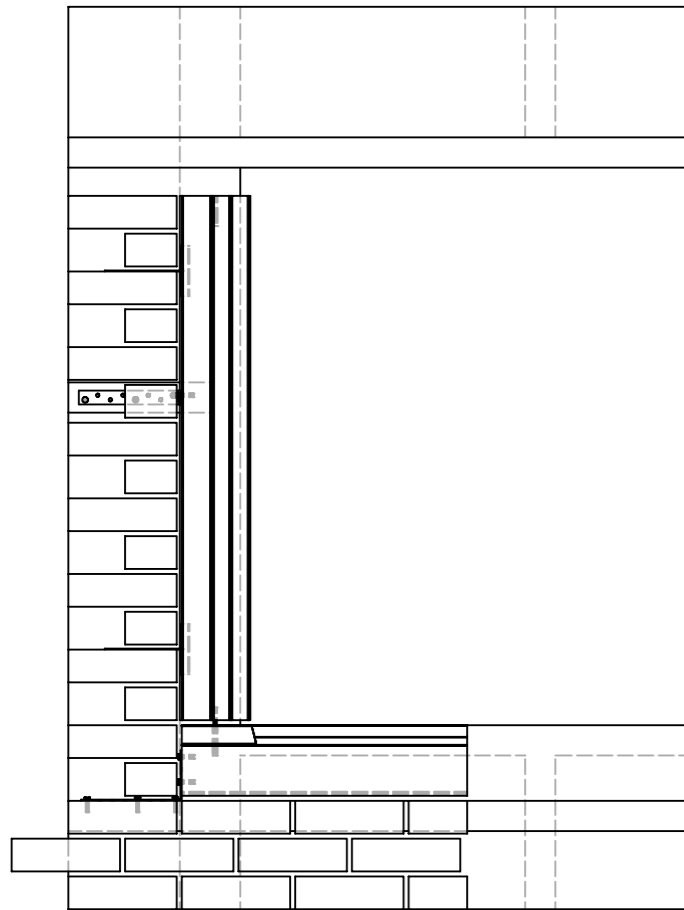
**ISO Elevation**

**Window Surround Installation Guide for Timber Frame Construction Stooled Sill – Strap & Wall Tie System, Sheet 2 of 5**

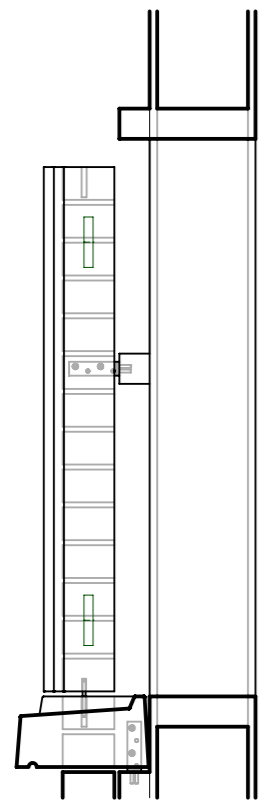
3. Ensure both edge panels of the window surrounds have M6 dowel bar securely fixed into the M6 drop in sleeve and post fix L-Shape galvanised steel temporary restraint strap(s) 30x5mm to the hidden side of the edge panels with Min. 1 No. of strap at the top of the panel (400mm from the top) or at Max. 1.50m c/c for larger panels, Min. 2 No. screws per strap secured to panel.
4. Then fill the 10mm Dia. dowel hole either side of the window sill with high strength grout. Then place the edge panels into the dowel holes and secure the temporary restraint strap(s) to the timber battens with Min. 2 No. screws per strap.

  
 Double L Concrete & Granite Products  
 Callaighstown, Rathcoole, Co. Dublin  
 ♦ Phone: +353 (0) 1 4580729  
 ♦ Fax: +353 (0) 1 4588168  
 ♦ Email: info@doubleconcrete.com  
 ♦ Web: www.doubleconcrete.com

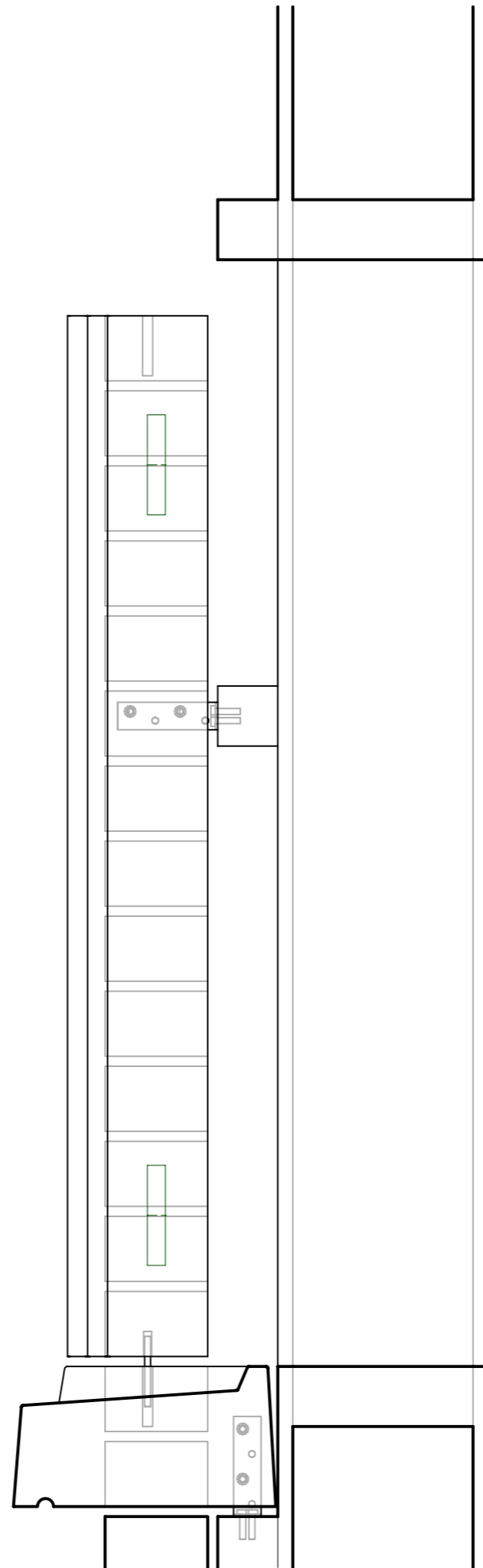
Title: <b>Window Surround Installation Guide for Timber Frame Construction Stooled Sill Strap &amp; Wall Tie System, Sheet 2 of 5</b>		
Drg. No.: <b>WSIGTFCSTS – SWTS 01</b>		
Scale: <b>NTS</b>	Rev.: <b>02</b>	Date: <b>20/06/2022</b>
Drawn by: <b>David Reichel</b>	Check by: <b>Damien Lee</b>	



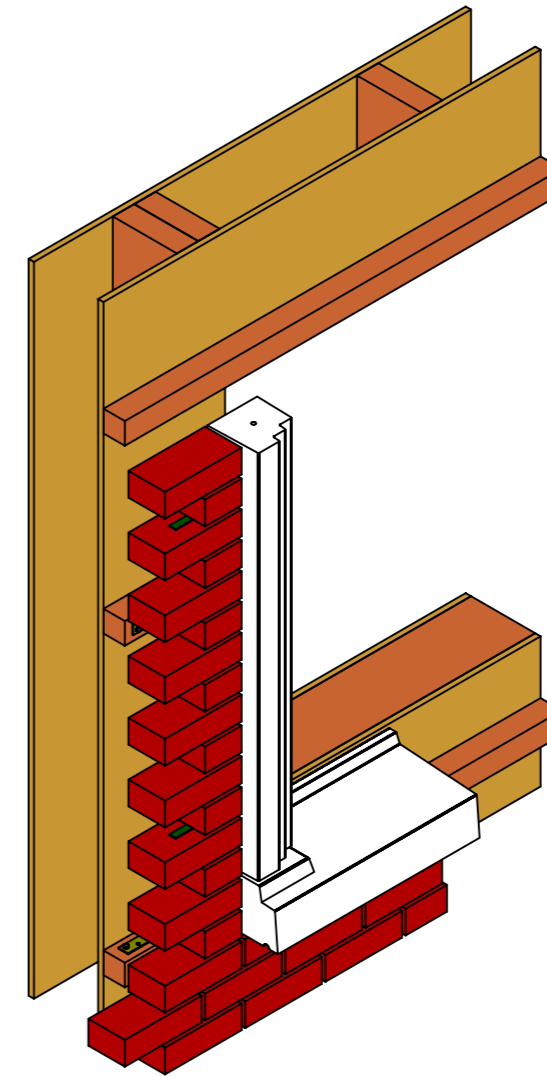
**Front Elevation**



**Right Side Elevation**




**Right Side Elevation - Detail**



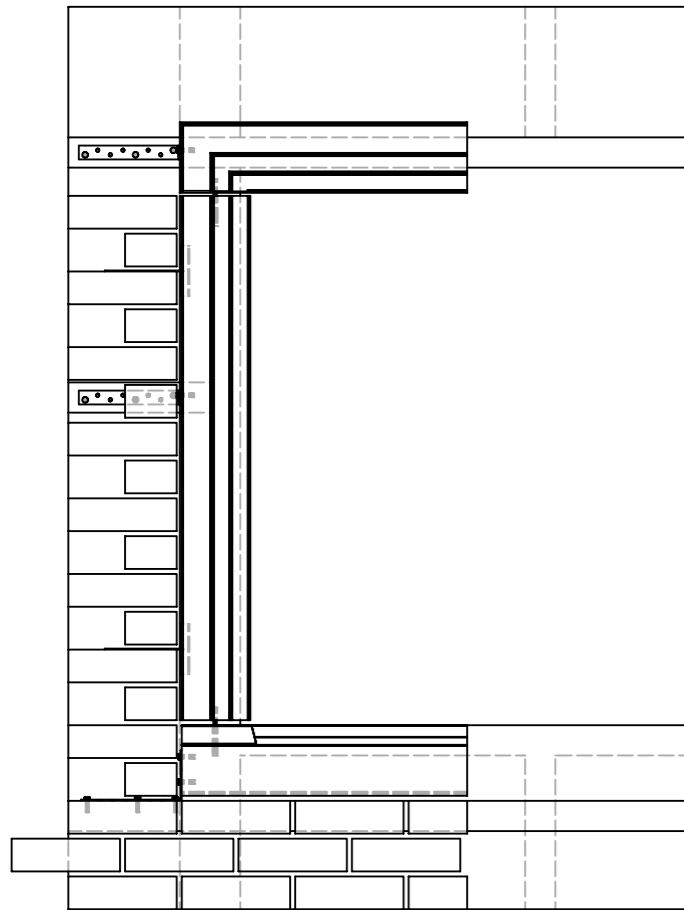
**ISO Elevation**

**Window Surround Installation Guide for Timber Frame Construction Stooled Sill – Strap & Wall Tie System, Sheet 3 of 5**

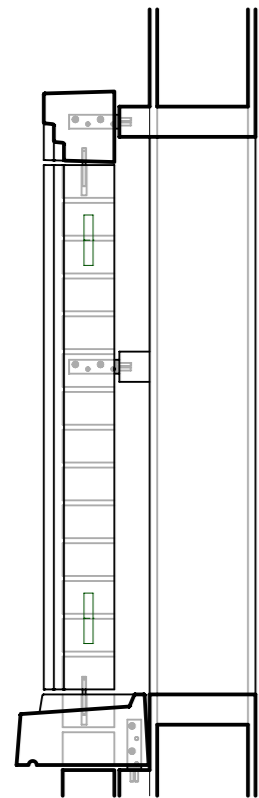
5. Slide in/ install wall ties into cast in channels to the hidden side of the edge panels. The channels should be cast in symmetrically at Max. 750mm c/c with Min. 2 No. of channels per panel. Ensure to shim and level edge panels into position and grout up the horizontal joints either side.
6. Then continue to rise outer brick/ block wall, ensure that the wall ties to be positioned into the mortar joints of the outer leaf.

  
 Double L Concrete & Granite Products  
 Callaighstown, Rathcoole, Co. Dublin  
 ♦ Phone: +353 (0) 1 4580729  
 ♦ Fax: +353 (0) 1 4588168  
 ♦ Email: info@doublelconcrete.com  
 ♦ Web: www.doublelconcrete.com

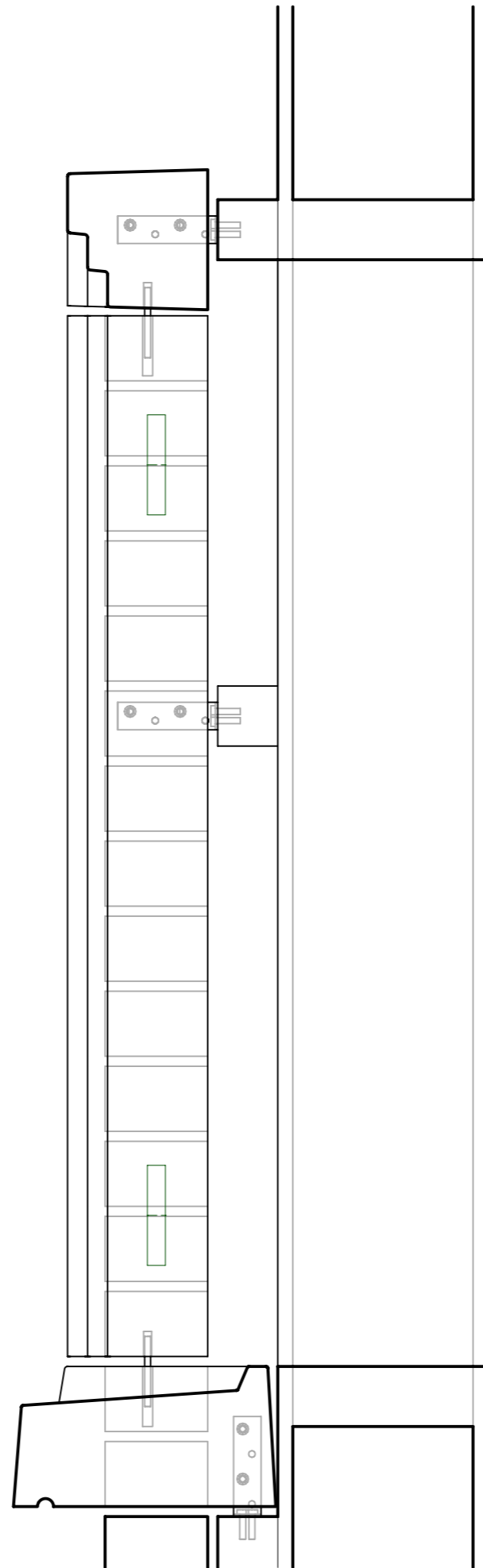
<b>Title:</b> Window Surround Installation Guide for Timber Frame Construction Stooled Sill Strap & Wall Tie System, Sheet 3 of 5		
<b>Drg. No.:</b> WSIGTFCSTS – SWTS 01		
<b>Scale:</b> NTS	<b>Rev.:</b> 02	<b>Date:</b> 20/06/2022
<b>Drawn by:</b> David Reichel	<b>Check by:</b> Damien Lee	



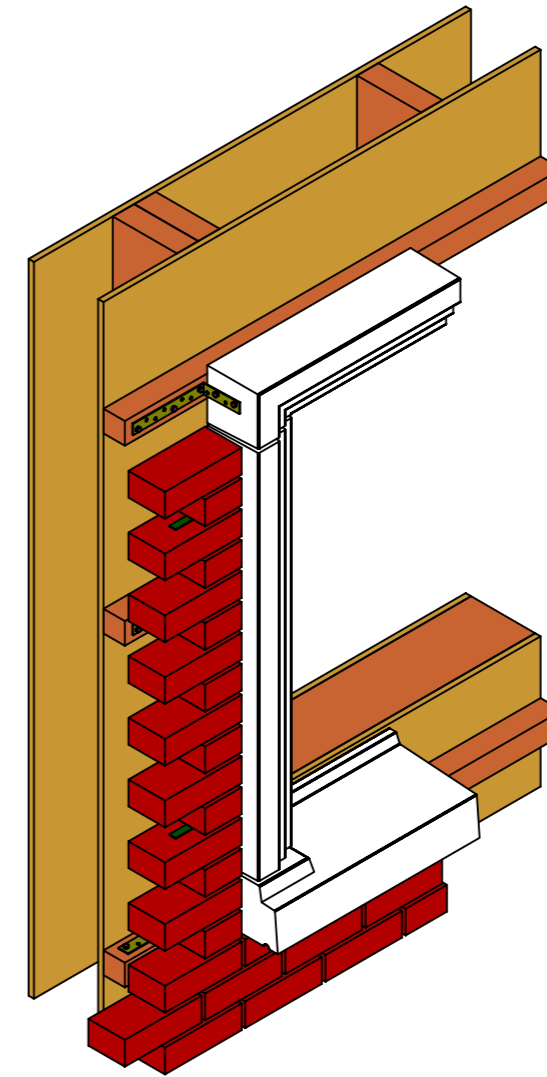
**Front Elevation**



**Right Side Elevation**




**Right Side Elevation - Detail**



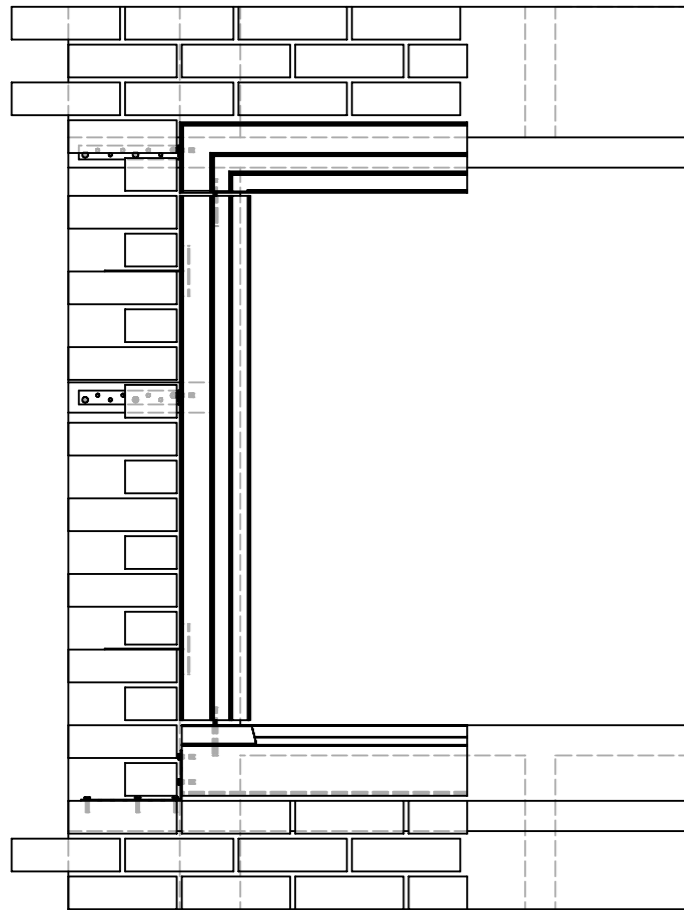
**ISO Elevation**

**Window Surround Installation Guide for Timber Frame Construction Stooled Sill – Strap & Wall Tie System, Sheet 4 of 5**

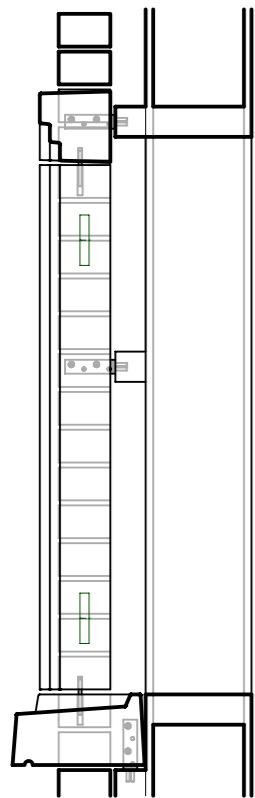
7. Once edge panels are securely fixed and mortar fully set. Post fix L-Shape galvanised steel strap with 2 screws each to the both ends of the recon stone lintel. Securely place the dowel bar into the M6 drop in sleeve in the lintel.
8. Then fill the 10mm Dia. dowel hole on the top of the edge panels. Place the lintel on top of the edge panels with dowel bar into the sleeve, ensure to shim and level. Then secure the L-Shape galvanised steel strap to the timber battens into the both ends of the lintel. Once the recon stone lintel is secured, fill the horizontal joints.

  
 Double L Concrete & Granite Products  
 Callaighstown, Rathcoole, Co. Dublin  
 ♦ Phone: +353 (0) 1 4580729  
 ♦ Fax: +353 (0) 1 4588168  
 ♦ Email: info@doublelconcrete.com  
 ♦ Web: www.doublelconcrete.com

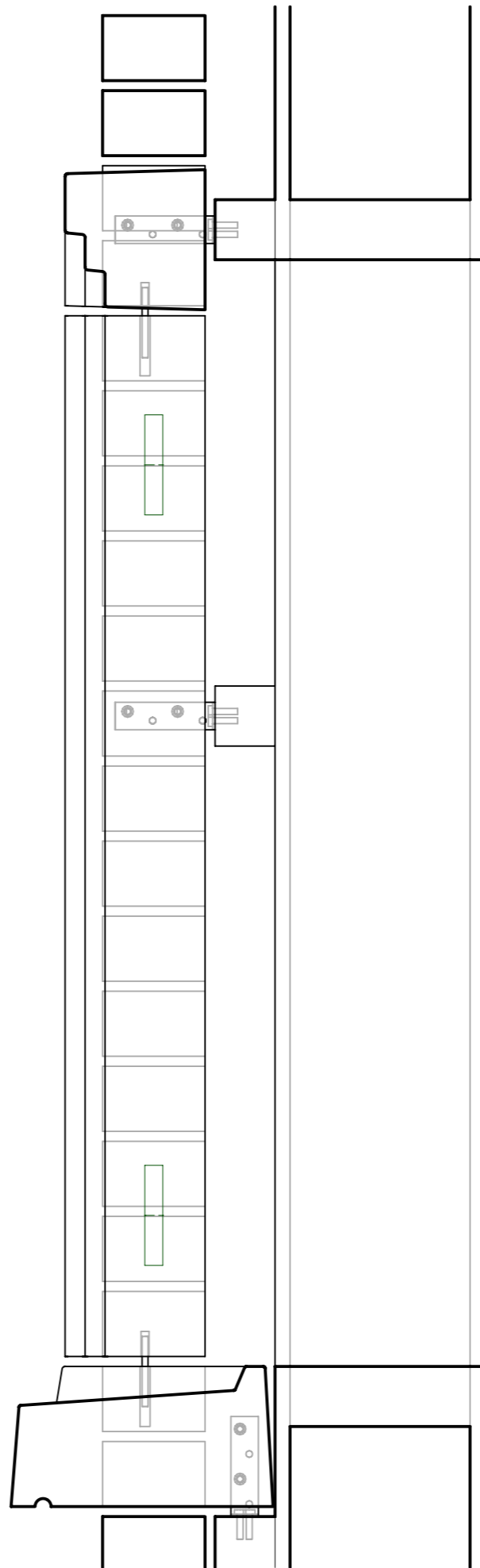
Title: <b>Window Surround Installation Guide for Timber Frame Construction Stooled Sill Strap &amp; Wall Tie System, Sheet 4 of 5</b>		
Drg. No.: <b>WSIGTFCSTS – SWTS 01</b>		
Scale: <b>NTS</b>	Rev.: <b>02</b>	Date: <b>20/06/2022</b>
Drawn by: <b>David Reichel</b>	Check by: <b>Damien Lee</b>	



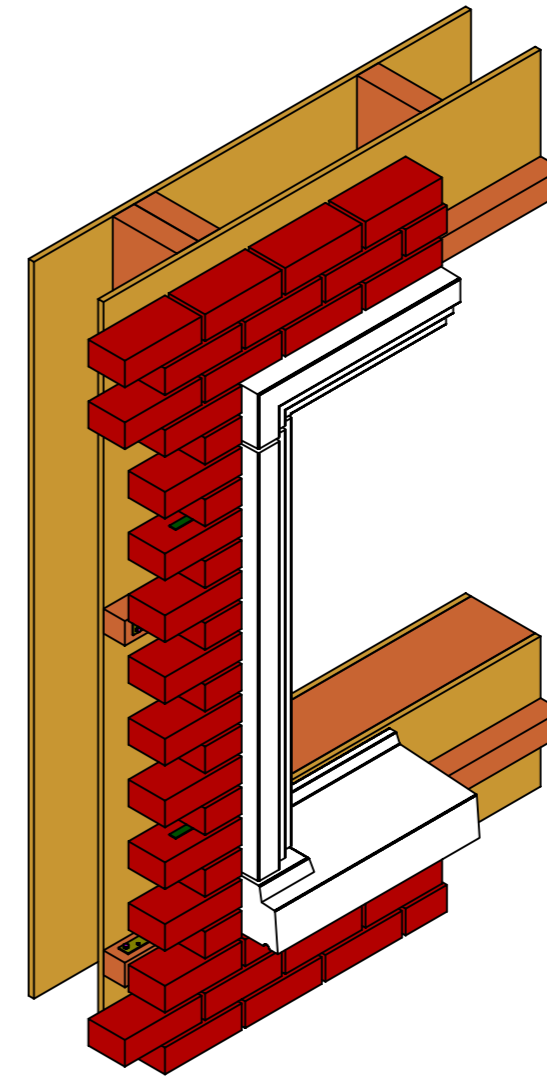
**Front Elevation**



**Right Side Elevation**




**Right Side Elevation - Detail**



**ISO Elevation**

**Window Surround Installation Guide for Timber Frame Construction Stooled Sill – Strap & Wall Tie System, Sheet 5 of 5**

9. Installation of the recon stone sill, lintel and window surround panels is completed. Continue to rise outer brick/ block wall over the lintel.

 <p>Double L Concrete &amp; Granite Products Callaighstown, Rathcoole, Co. Dublin</p> <p>♦ Phone: +353 (0) 1 4580729 ♦ Fax: +353 (0) 1 4588168 ♦ Email: info@doublelconcrete.com ♦ Web: www.doublelconcrete.com</p>	<p>Title: <b>Window Surround Installation Guide for Timber Frame Construction Stooled Sill Strap &amp; Wall Tie System, Sheet 5 of 5</b></p>		
	<p>Drg. No.: <b>WSIGTFCSTS – SWTS 01</b></p>		
	<p>Scale: <b>NTS</b></p>	<p>Rev.: <b>02</b></p>	<p>Date: <b>20/06/2022</b></p>
	<p>Drawn by: <b>David Reichel</b></p>	<p>Check by: <b>Damien Lee</b></p>	