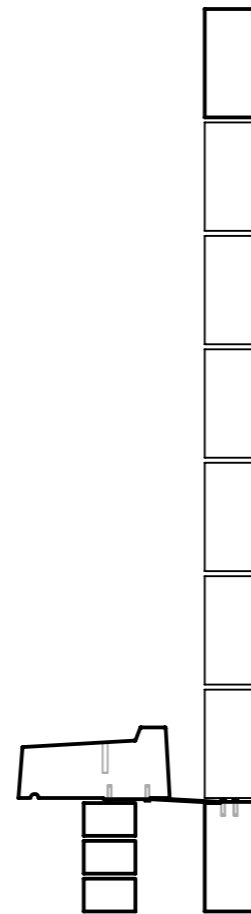
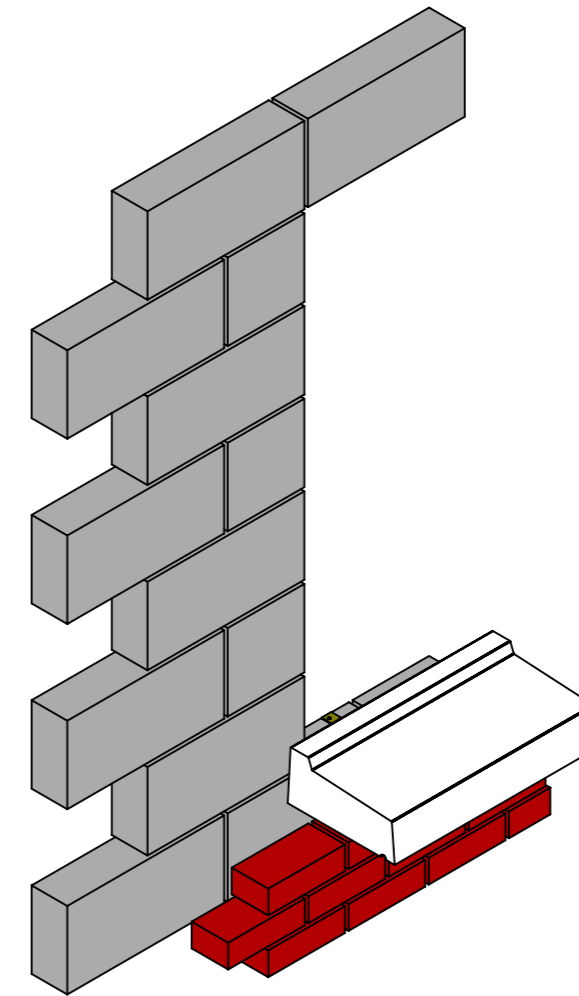


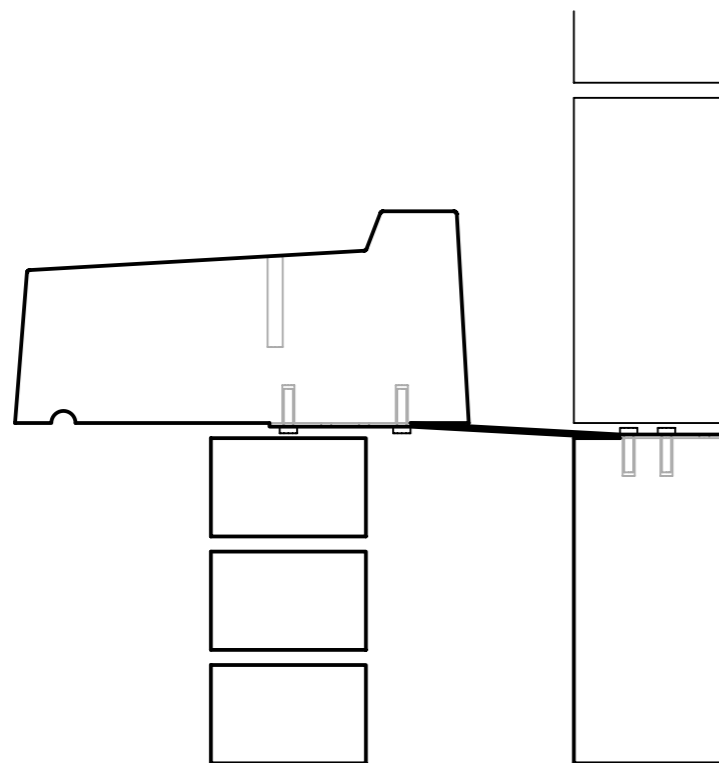
Front Elevation



Right Side Elevation




ISO Elevation

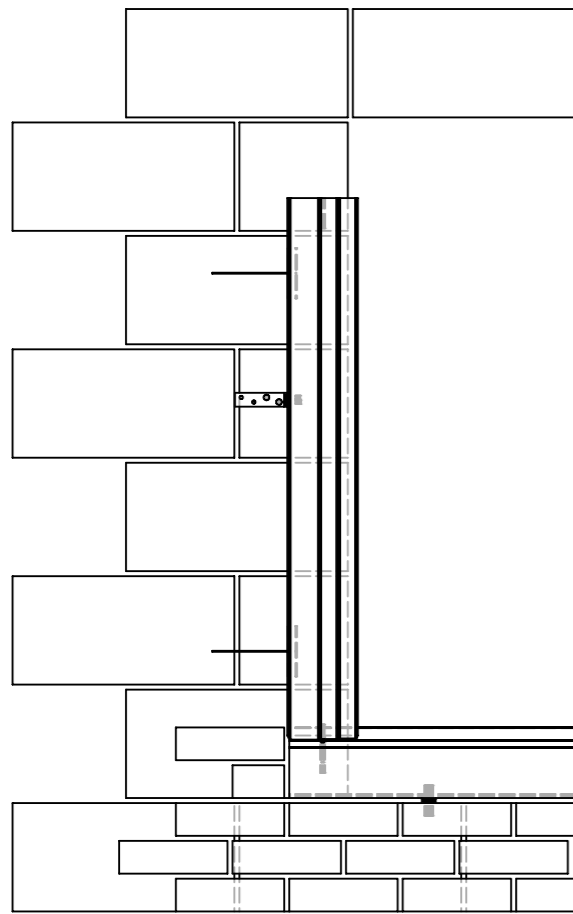


Right Side Elevation - Detail

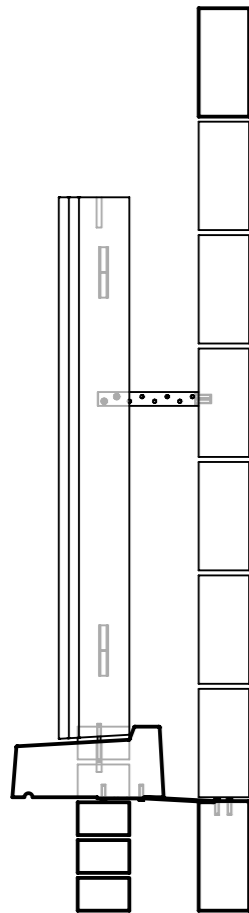
Window Surround Installation Guide for Blockwork Construction Standard Sill – Strap & Wall Tie System, Sheet 1 of 5

1. Construct outer leaf brick/ block wall up to the underside of the sill. Ensure bricks/ blocks below are fully set, then post fix galvanised steel straps 30x5mm to the underside of the recon stone sill with Min. 2 No. screws each. Place the straps symmetrically 750mm c/c and Min. 2 No. per the sill.
2. Pour the mortar bed for the recon stone window sill and place the window sill, shim, and level into position. Once levelled secure the straps to the blockwork inner leaf with Min. 2 No. screws per strap into the blockwork. Once the window sill is fully installed allow the mortar to dry.

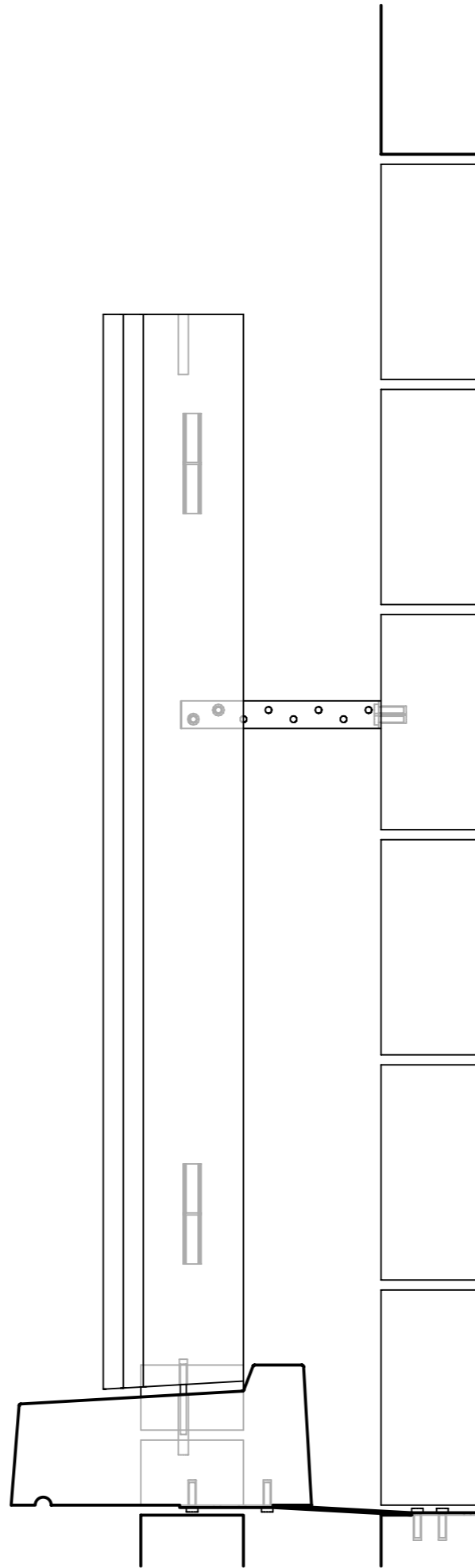
 <p>Double L Concrete & Granite Products Callaighstown, Rathcoole, Co. Dublin</p> <p>♦ Phone: +353 (0) 1 4580729 ♦ Fax: +353 (0) 1 4588168 ♦ Email: info@doubleconcrete.com ♦ Web: www.doubleconcrete.com</p>	<p>Title: Window Surround Installation Guide for Blockwork Construction Standard Sill Strap & Wall Tie System, Sheet 1 of 5</p>		
	<p>Drg. No.: WSIGBCSS – SWTS 01</p>		
	<p>Scale: NTS</p>	<p>Rev.: 01</p>	<p>Date: 21/06/2022</p>
	<p>Drawn by: David Reichel</p>	<p>Check by: Damien Lee</p>	



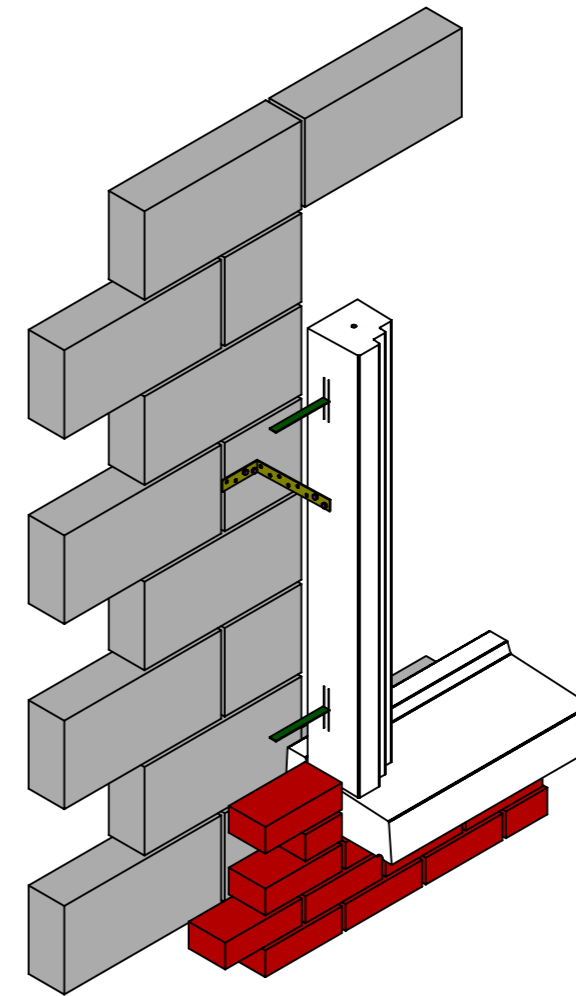
Front Elevation



Right Side Elevation



Right Side Elevation - Detail



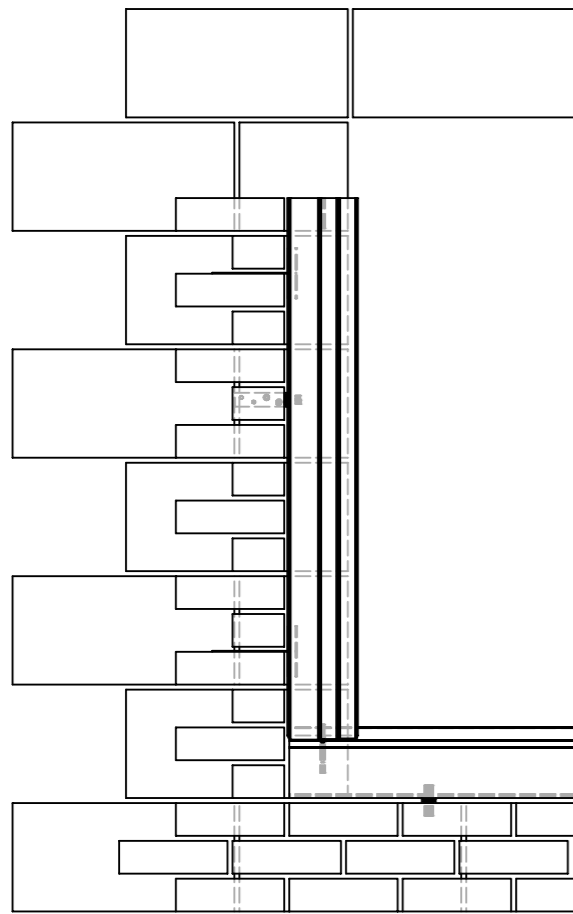
ISO Elevation

Window Surround Installation Guide for Blockwork Construction Standard Sill – Strap & Wall Tie System, Sheet 2 of 5

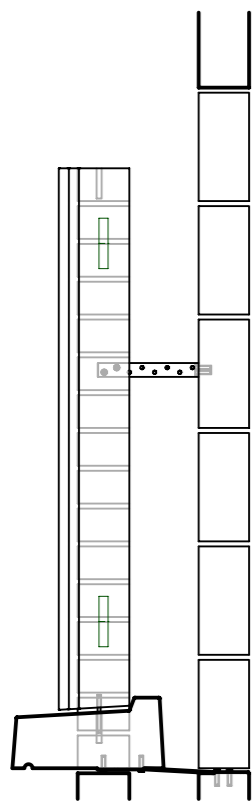
3. Ensure both edge panels of the window surrounds have M6 dowel bar securely fixed into the M6 drop in sleeve and post fix the L-Shape galvanised steel temporary restraint strap(s) 30x5mm to the hidden side of the edge panels with Min. 1 No. of strap at the top of the panel (400mm from the top) or at Max. 1.50m c/c for larger panels, Min. 2 No. screws per strap secured to panel.
4. Then fill the 10mm Dia. dowel hole either side of the window sill with high strength grout. Then place the edge panels into the dowel holes and secure the temporary restraint strap(s) to the blockwork inner leaf with Min. 2 No. screws per strap.


 Double L Concrete & Granite Products
 Callaighstown, Rathcoole, Co. Dublin
 ♦ Phone: +353 (0) 1 4580729
 ♦ Fax: +353 (0) 1 4588168
 ♦ Email: info@doubleconcrete.com
 ♦ Web: www.doubleconcrete.com

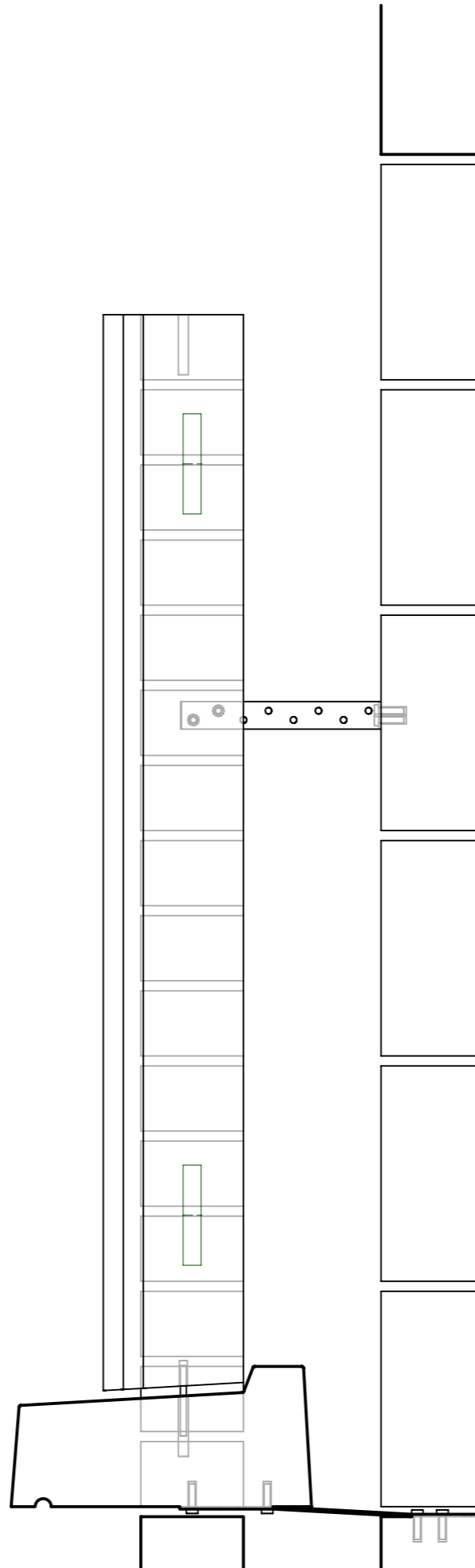
Title: Window Surround Installation Guide for Blockwork Construction Standard Sill Strap & Wall Tie System, Sheet 2 of 5		
Drg. No.: WSIGBCSS – SWTS 01		
Scale: NTS	Rev.: 01	Date: 21/06/2022
Drawn by: David Reichel	Check by: Damien Lee	



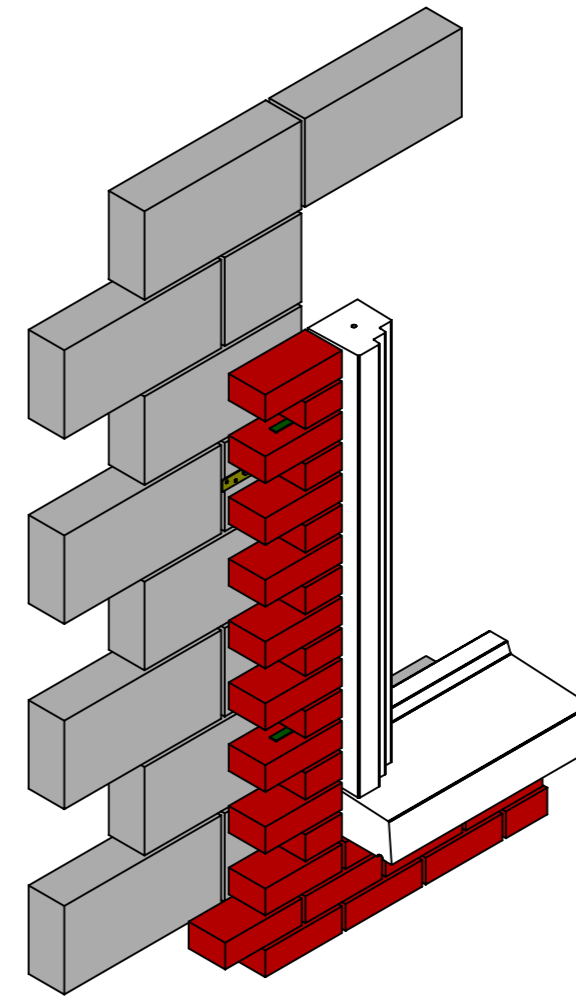
Front Elevation



Right Side Elevation




Right Side Elevation - Detail

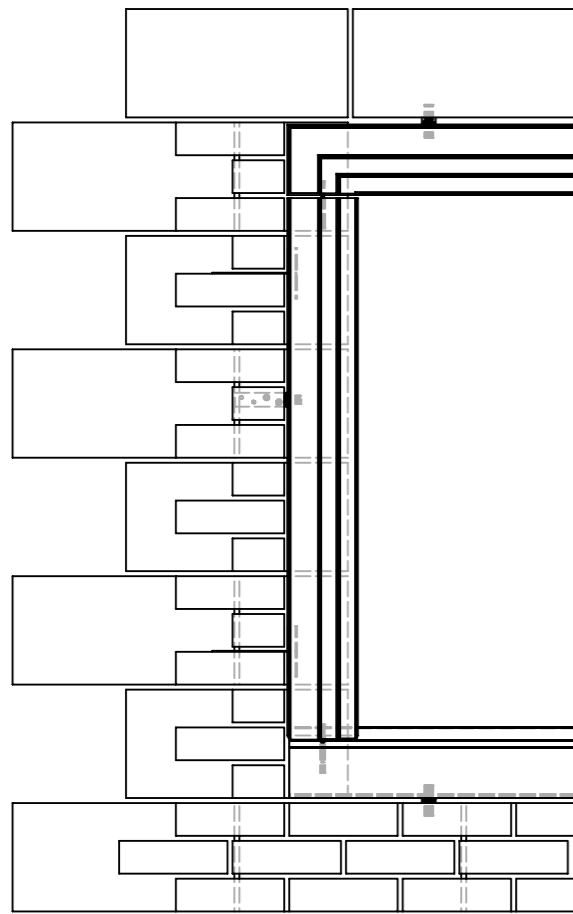


ISO Elevation

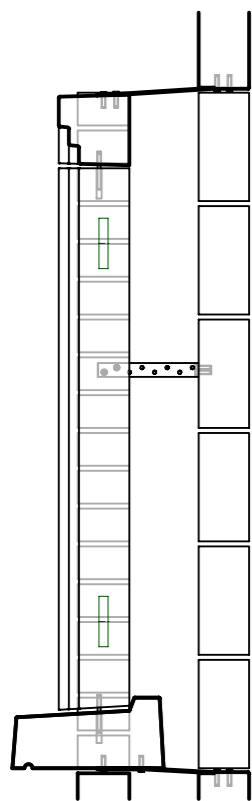
Window Surround Installation Guide for Blockwork Construction Standard Sill – Strap & Wall Tie System, Sheet 3 of 5

5. Slide in/ install wall ties into cast in channels to the hidden side of the edge panels. The channels should be cast in symmetrically at Max. 750mm c/c with Min. 2 No. of channels per panel. Ensure to shim and level edge panels into position and grout up the horizontal joints either side.
6. Then continue to rise outer brick/ block wall, ensure that the wall ties to be positioned into the mortar joints of the outer leaf.

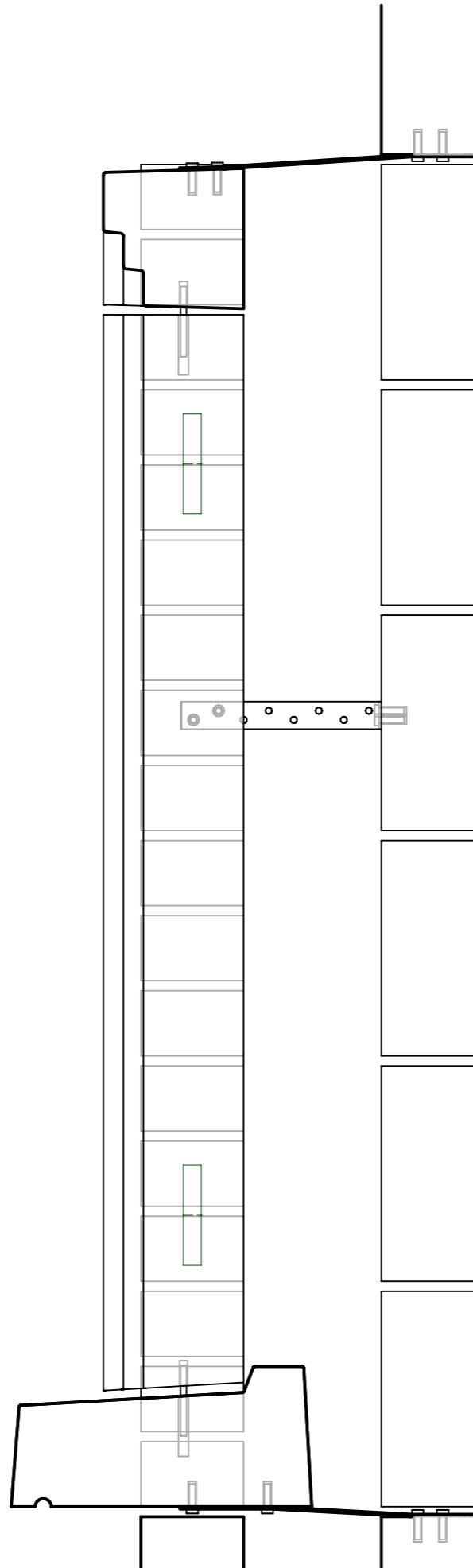
 Double L Concrete & Granite Products Callaighstown, Rathcoole, Co. Dublin ♦ Phone: +353 (0) 1 4580729 ♦ Fax: +353 (0) 1 4588168 ♦ Email: info@doubleconcrete.com ♦ Web: www.doubleconcrete.com	Title: Window Surround Installation Guide for Blockwork Construction Standard Sill Strap & Wall Tie System, Sheet 3 of 5		
	Drg. No.: WSIGBCSS – SWTS 01		
	Scale: NTS	Rev.: 01	Date: 21/06/2022
	Drawn by: David Reichel	Check by: Damien Lee	



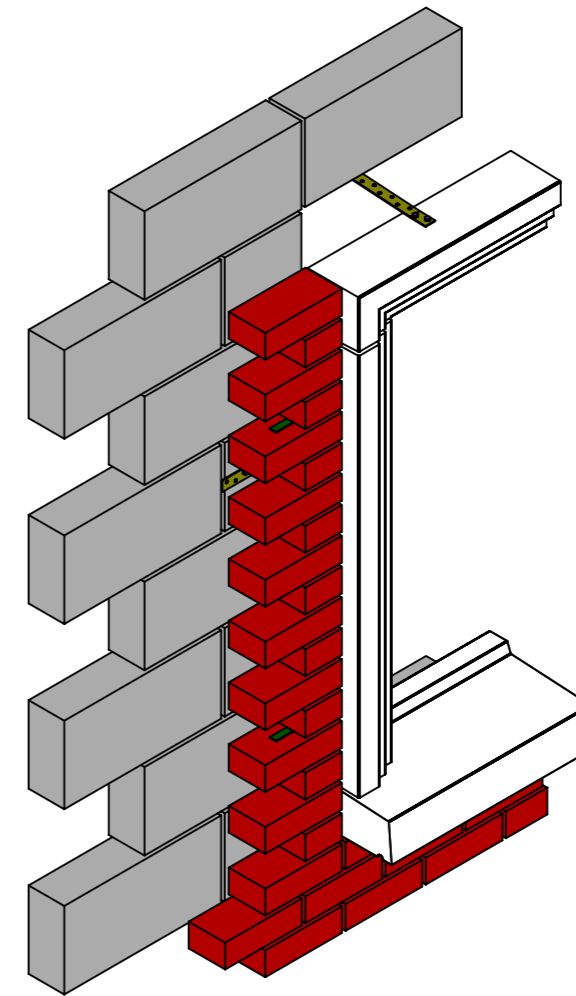
Front Elevation



Right Side Elevation



Right Side Elevation - Detail



ISO Elevation

Window Surround Installation Guide for Blockwork Construction Standard Sill – Strap & Wall Tie System, Sheet 4 of 5

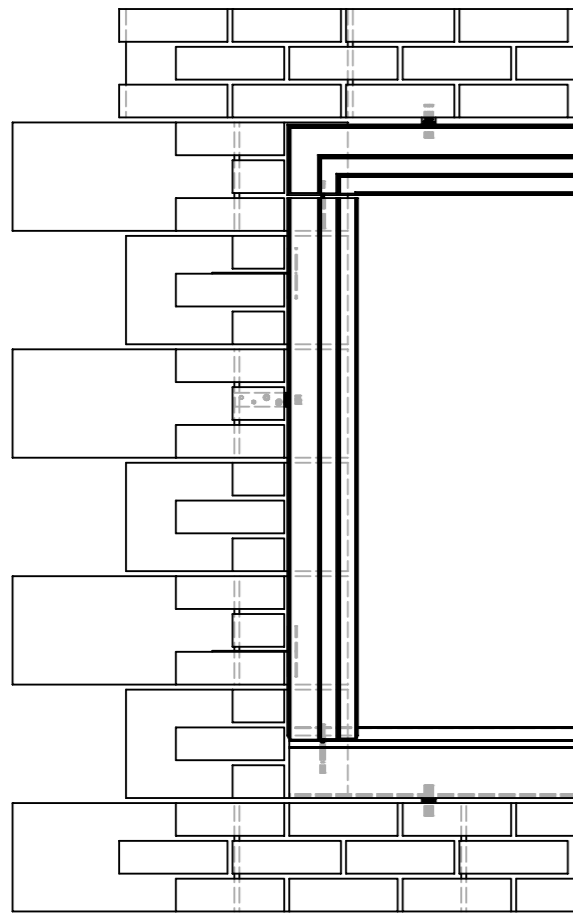
7. Once edge panels are securely fixed and mortar fully set. Post fix Min. 2 No. galvanised steel straps at Max. 750mm c/c with 2 screws each to the top of the recon stone lintel. Securely place the dowel bar into the M6 drop in sleeve in the lintel.
8. Then fill the 10mm Dia. dowel hole on the top of the edge panels. Place the lintel on top of the edge panels with dowel bar into the sleeve, ensure to shim and level. Then secure the galvanised steel straps to inner leaf lintel. Ensure there are 2 No. screws per strap and the screws do not clash with the inner leaf lintel rebar or tendons. Once the recon stone lintel is secured, fill the horizontal joints.

DOUBLE
CONCRETE & GRANITE PRODUCTS

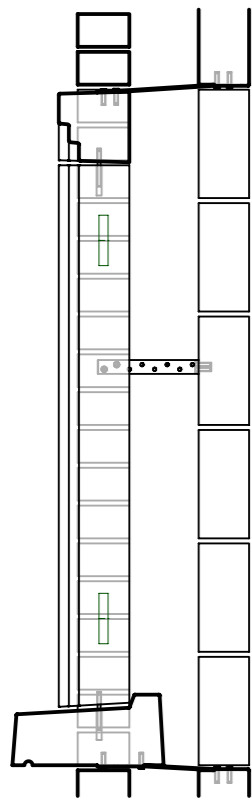
Double L Concrete & Granite Products
Callaighstown, Rathcoole, Co. Dublin

♦ Phone: +353 (0) 1 4580729
♦ Fax: +353 (0) 1 4588168
♦ Email: info@doubleconcrete.com
♦ Web: www.doubleconcrete.com

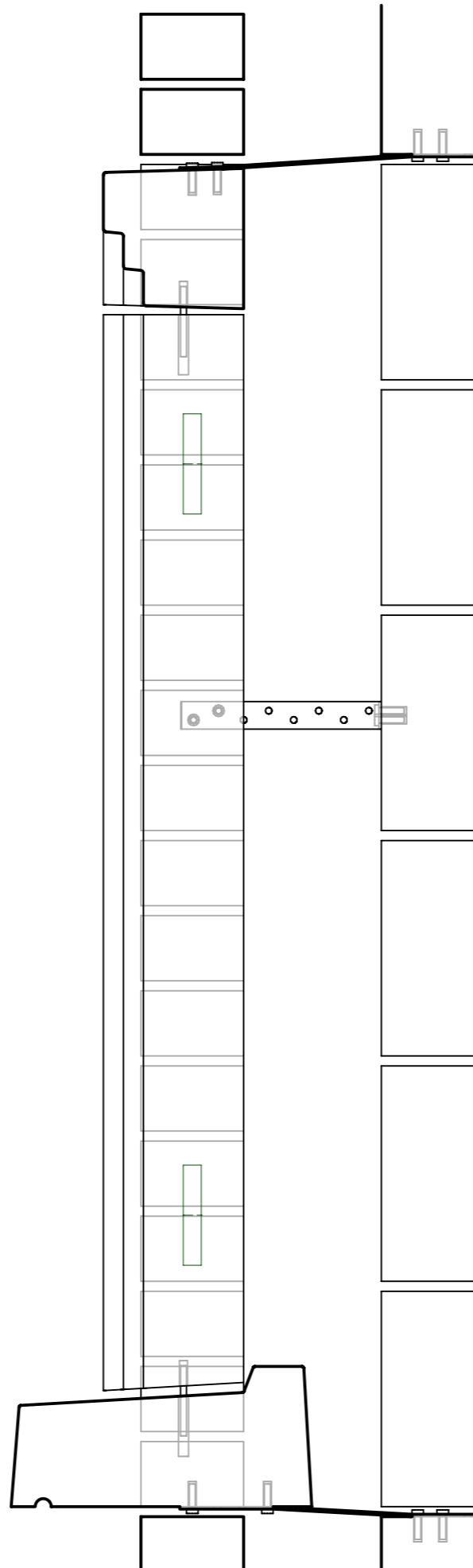
Title: Window Surround Installation Guide for Blockwork Construction Standard Sill Strap & Wall Tie System, Sheet 4 of 5		
Drg. No.: WSIGBCSS – SWTS 01		
Scale: NTS	Rev.: 01	Date: 21/06/2022
Drawn by: David Reichel	Check by: Damien Lee	



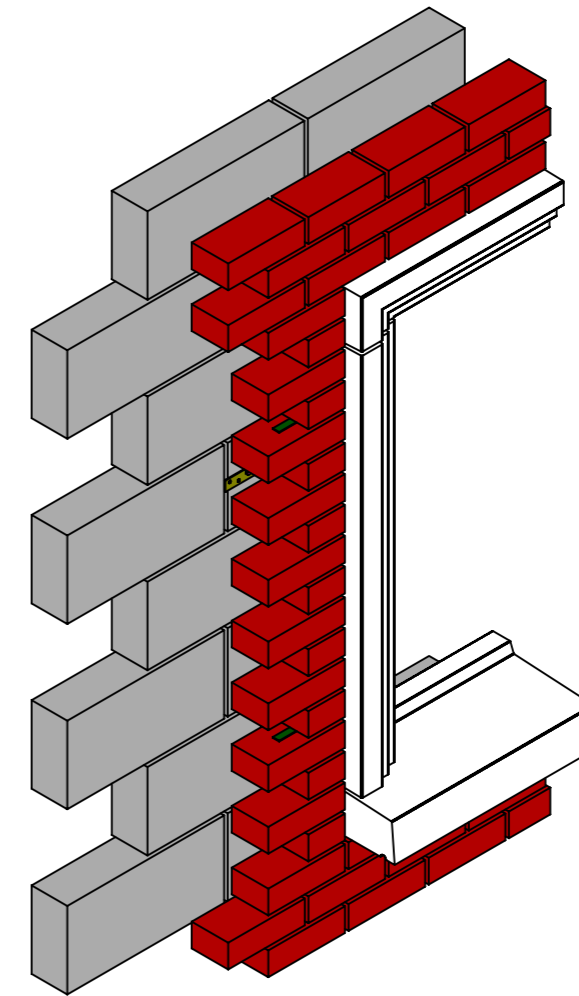
Front Elevation



Right Side Elevation



Right Side Elevation - Detail



ISO Elevation

Window Surround Installation Guide for Blockwork Construction Standard Sill – Strap & Wall Tie System, Sheet 5 of 5

9. Installation of the recon stone sill, lintel and window surround panels is completed. Continue to rise outer brick/ block wall over the lintel.


 Double L Concrete & Granite Products
 Callaighstown, Rathcoole, Co. Dublin
 ♦ Phone: +353 (0) 1 4580729
 ♦ Fax: +353 (0) 1 4588168
 ♦ Email: info@doubleconcrete.com
 ♦ Web: www.doubleconcrete.com

Title: Window Surround Installation Guide for Blockwork Construction Standard Sill Strap & Wall Tie System, Sheet 5 of 5		
Drg. No.: WSIGBCSS – SWTS 01		
Scale: NTS	Rev.: 01	Date: 21/06/2022
Drawn by: David Reichel	Check by: Damien Lee	